

## **Great North Road Solar and Biodiversity Park**

Statement of Community Consultation Materials

Document reference - EN010162/APP/5.1.5

Revision number 1

June 2025

Infrastructure Planning (Applications: Prescribed Forms and Procedure) Regulations 2009, APFP Regulation 5(2)(q)

## Contents

<b>1</b>	<b>Early Working Draft Statement of Community Consultation .....</b>
<b>2</b>	<b>Letter to LPAs regarding Draft Statement of Community Consultation.....</b>
<b>3</b>	<b>Published Statement of Community Consultation .....</b>
<b>4</b>	<b>Evidence of final SoCC hosted on Website Document Library .....</b>
<b>5</b>	<b>Copies of Section 47 notices as placed (in Newark Advertiser and Nottingham Post).....</b>

# **1 EARLY WORKING DRAFT STATEMENT OF COMMUNITY CONSULTATION**



## **Great North Road Solar Park**

Draft Statement of Community Consultation

For consultation with Newark and Sherwood District Council and  
Nottinghamshire County Council

July 2024







## Contents

<b>1</b>	<b>Background.....</b>	<b>2</b>
<b>2</b>	<b>Our consultation process.....</b>	<b>4</b>
<b>3</b>	<b>Method of consultation.....</b>	<b>6</b>
<b>4</b>	<b>Who will we will consult .....</b>	<b>8</b>
<b>5</b>	<b>When we will consult.....</b>	<b>12</b>
<b>6</b>	<b>What we will consult on.....</b>	<b>13</b>
<b>7</b>	<b>How we will consult and how respondents can participate .....</b>	<b>14</b>
<b>8</b>	<b>Consultation Reporting .....</b>	<b>19</b>

DRAFT



## 1 BACKGROUND

- 1.1.1 Elements Green (“the Applicant”) is bringing forward proposals for Great North Road Solar Park (“the Project”) located to the west of Newark in Nottinghamshire.
- 1.1.2 With a potential generation capacity of around 800 megawatts (MW), the Project has the potential to meet the power needs of circa 400,000 homes.
- 1.1.3 The Project will connect into National Grid’s existing Staythorpe substation.
- 1.1.4 As the Project’s anticipated generation capacity exceeds 50MW it is classified as a Nationally Significant Infrastructure Project (NSIP). This means it requires a development consent order (DCO) under the Planning Act 2008 (PA 2008). The PA 2008 requires promoters of NSIPs to carry out a formal stage of consultation referred to as a ‘Statutory Consultation’ to take place over a minimum of 28 days.
- 1.1.5 Prior to this statutory stage of consultation, and in accordance with Section 47 of the PA 2008, consultation is being sought on a draft Statement of Community Consultation (SoCC) with the host local planning Authorities (LPAs). These authorities comprise:
  - Newark and Sherwood District Council
  - Nottinghamshire County Council.
- 1.1.6 Comments received from these authorities on the draft SoCC will be considered by Elements Green when preparing a final SoCC for publication.
- 1.1.7 The final SoCC will then be publicised and made available for inspection. This is anticipated as taking place two weeks in advance of statutory consultation launching in Autumn 2024.
- 1.1.8 Statutory consultation will be undertaken in accordance with the methodology and commitments set out in the SoCC as published.
- 1.1.9 Prior to this stage, Elements Green has already undertaken non-statutory consultation and engagement to inform the emerging proposals for Great North Road. This included a six-week phase of consultation held between Tuesday 16 January 2024 to Tuesday 27 February 2024.
- 1.1.10 The aim of the first phase of consultation (Phase One) was to introduce Elements Green and the overall Project, share information about the emerging proposals and give individuals and interested parties an early opportunity to have their say and share their views and local knowledge. The feedback received during this initial consultation has informed and shaped the ongoing design development and evolution of the proposal.
- 1.1.11 Experience from Phase One consultation has also informed the proposed approach to statutory consultation, as set out in this draft SoCC.
- 1.1.12 The purpose of this draft SoCC is to seek the views of relevant local authorities on this proposed approach to statutory consultation.

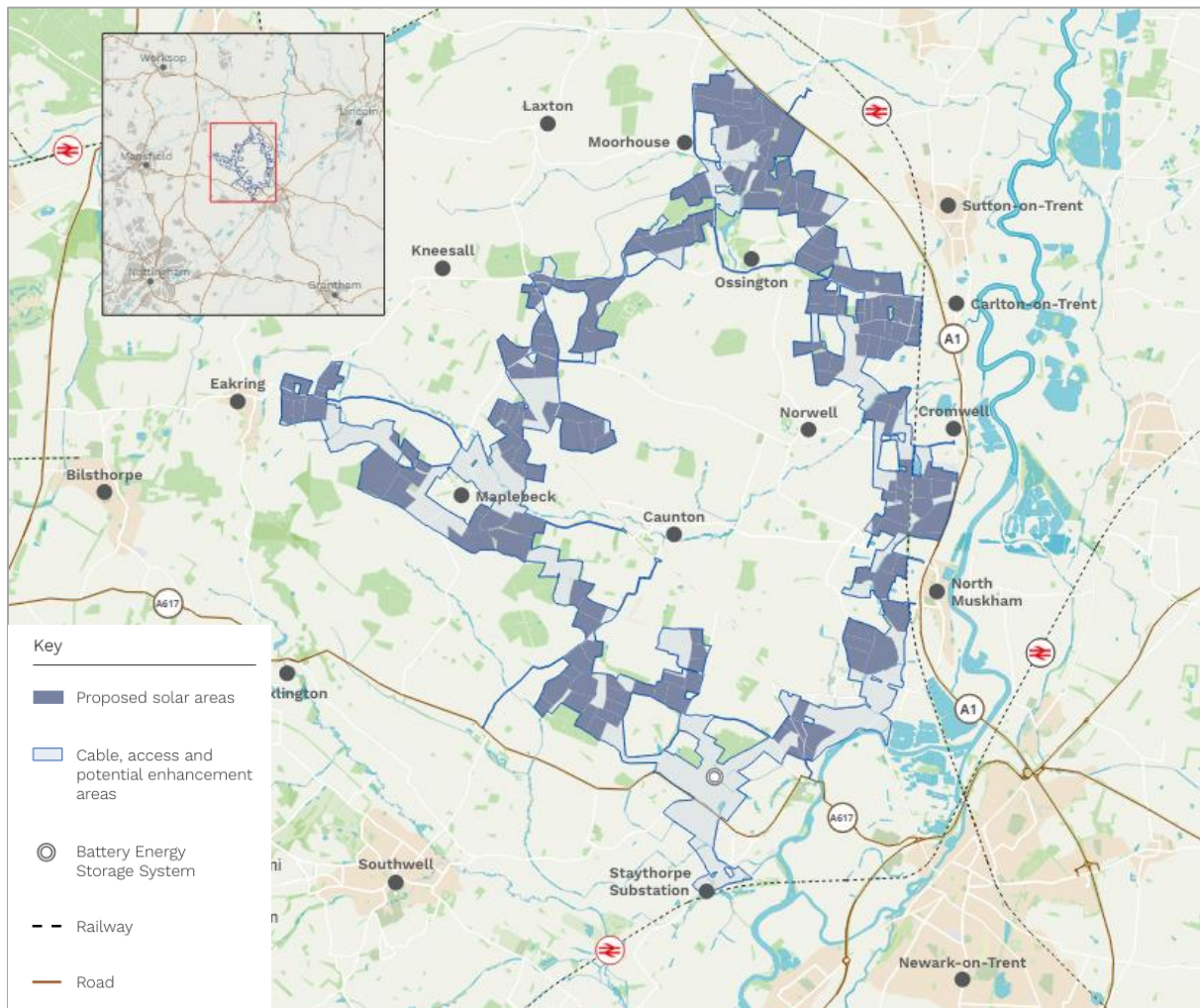


Figure 1. Site location plan



## 2 OUR CONSULTATION PROCESS

2.1.1 The proposed approach is an iterative two-phase consultation process for the Project whereby feedback and information received in response to consultation will inform the refinement of the Project design and options.

2.1.2 This includes:

**Phase One (non-statutory) community consultation**, held between 16 January and 27 February 2024 to:

- Introduce the proposals and developer.
- Seek initial feedback on the Project and emerging proposal to inform design refinement.
- Identify local schemes or projects the Project could support or deliver to benefit those communities closest to the project.
- Understand any opportunities to improve consultation methods ahead of phase two (statutory) consultation.

**Phase Two (statutory) consultation**, to be held for six weeks across September and October 2024. Consultation will seek to gather feedback on the refined design, proposed mitigation and information presented in the Preliminary Environmental Information Report (PEIR).

2.1.3 Prior to commencing Phase One Community Consultation, the Applicant shared a draft methodology with the local planning authorities of Newark and Sherwood District Council and Nottinghamshire County Council for their review. Comments received at this stage have been considered in preparing this draft SoCC.

2.1.4 In carrying out Phase One Community Consultation on the emerging proposals for the Project, Elements Green sought to help stakeholders and local communities to understand the Project sufficiently, what it could mean for them (including potential benefits), and how they can become involved at the pre-application stage in the development process.

2.1.5 Experience of the Phase One Consultation – such as attendance at public information events and the levels and format of feedback received – has also been considered by Elements Green when preparing their proposed approach to statutory consultation.

2.1.6 The Project team has considered all feedback received during Phase One Consultation. This process has informed further updates to the proposals for the Project.

2.1.7 Elements Green published updated early visual amenity changes in March 2024 to demonstrate specific changes to landscape plans in response to feedback received. In most cases this involved panels being removed and in one case a substation has been relocated.

2.1.8 Further to this, Elements Green intends to publish a Consultation Summary Report in Summer 2024, to explain to transparently report on the feedback received to Phase One Community Consultation and explain how this is being considered by the Project team.



- 2.1.9 Elements Green is now preparing to undertake a statutory phase of consultation, as described in this draft SoCC.
- 2.1.10 Following this, a Consultation Report will be submitted to the Planning Inspectorate as part of the Project Development Consent Order (DCO) application. The Consultation Report will describe and evidence consultation undertaken, the level of engagement with this consultation, and how the consideration has been given to feedback received.

DRAFT



### 3 METHOD OF CONSULTATION

- 3.1.1 Elements Green is fully committed to good practice in public consultation. Consultation for the Project is also informed by the requirements of the 2008 Act and by the Ministry of Housing, Communities and Local Government (MHCLG) guidance (published by the former Department for Communities and Local Government. Dec 2015). We are committed to ensuring that the consultation process and all associated communications are made accessible to as many people, communities and interested organisations as possible.
- 3.1.2 It will be necessary to employ a variety of consultation methods so that our consultation is appropriate and accessible to all those people who wish to participate. The methodology we have developed has had regard to the experience of the team in delivering non-statutory consultation on for Great North Road Solar Park. The Statements of Community Involvement (SCI) adopted by the relevant local authorities<sup>1</sup> have also been reviewed and considered. The proposed methodology utilises a range of tools and techniques to ensure all identified stakeholders are effectively consulted and involved in the Project development process.
- 3.1.3 These tools and techniques will include:
- Project specific freephone, email and freepost address.
  - Project website.
  - In-person and virtual meetings and presentations.
  - Direct mail of consultation information to properties within the defined core consultation zone (see Section 4).
  - Information posters, issued for display at public venues within the core consultation zone.
  - Use of local print and online media – editorial and advertising.

<sup>1</sup> [Newark and Sherwood District Council Statement of Community Consultation \(Adopted 2015\)](#)  
[Nottinghamshire County Council Statement of Community Involvement \(Adopted 2018\)](#)  
[Bassetlaw District Council Statement of Community Involvement \(Adopted January 2020\)](#)

Relevant sections from Newark and Sherwood District Council include:

- 3.7 Pre-Application Consultation with Local Communities (p16):  
*"Large scale ground-mounted solar photovoltaic farms can also be controversial and the Council will expect developers to show evidence of meaningful community consultation. Whether compulsory or not, well publicised pre-application consultation can facilitate 16 development by identifying community concerns at an early stage and offering local residents an opportunity to engage with the development process."*
- 3.8 Consultation requested by the District Council  
*"The developer should show that they have consulted with representatives of Parish Councils or Meetings of all affected parishes, as well as residents. The Council will expect to see evidence that people were fully informed about the proposal and given adequate time to respond to the consultation. The developer should show the views expressed have been taken into account."*





- Use of social media to publicise consultation opportunities, including the Great North Road Facebook page and preparing information to be shared via external existing social media channels.
- In-person information events at publicly accessible locations.
- Virtual webinar format information event.
- Provision of information in alternative languages and formats by request and as necessary.
- Working with local authorities and parish councils.

3.1.4 For further details please see Section 7 'How we will consult and how respondents can participate'.

3.1.5 The information and materials we will use to inform the consultation will provide details of:

- The extent of the Project, referred to as an Order Limits.
- Environmental information, including results from ongoing assessments, descriptions of potential effects arising from the solar park, and proposals for these could be managed.
- A proposed design, setting out:
  - Areas for solar PV and electrical infrastructure
  - Areas for mitigation and enhancement measures
  - Cable routes



## 4 WHO WILL WE WILL CONSULT

- 4.1.1 Anyone interested in the proposals for Great North Road Solar Park is encouraged to take part in consultation.
- 4.1.2 In accordance with Section 47 of the PA 2008, reasonable efforts will be made to ensure that communities within the vicinity of the proposals are aware of consultation opportunities. There is no set rule that defines those people, groups or organisations falling into this category.
- 4.1.3 To help determine the areas where we will consult, professional judgement has been adopted and considered based on common practice, potential effects, and existing infrastructure.
- 4.1.4 The Statements of Community Involvement (SCI) adopted by the Local Planning Authorities, within whose boundaries our proposed scheme lies (see 1.3), have been considered<sup>2</sup>. This helped determine the zone within which each undertake formal consultation, in respect of major development proposals.

### 4.1.5 Core consultation zone

- 4.1.6 Having considered this, an appropriate core consultation zone initially extending a minimum distance of two kilometres from the boundary of the Project site and one kilometre from the edge of the cable route corridor. Where proportionate and reasonable, the zone has then been extended further subject to consideration of:

Zone of theoretical visibility to assess areas in vicinity of the project boundary which could experience a degree of visual impact.

Existing natural and human geographical boundaries, for example railway lines, A-roads and/or motorways, River Trent.

Avoiding splitting communities.

Coverage of the host district council wards and parishes.

Where we propose to undertake additional works to enable construction transport, equipment areas or road modifications.

---

<sup>2</sup> The SCI adopted by those local authorities affected by the Project do not have a predetermined distance from a proposed site within which they consult. Consultation zones are rather determined on a case-by-case basis identifying the nearest affected properties.



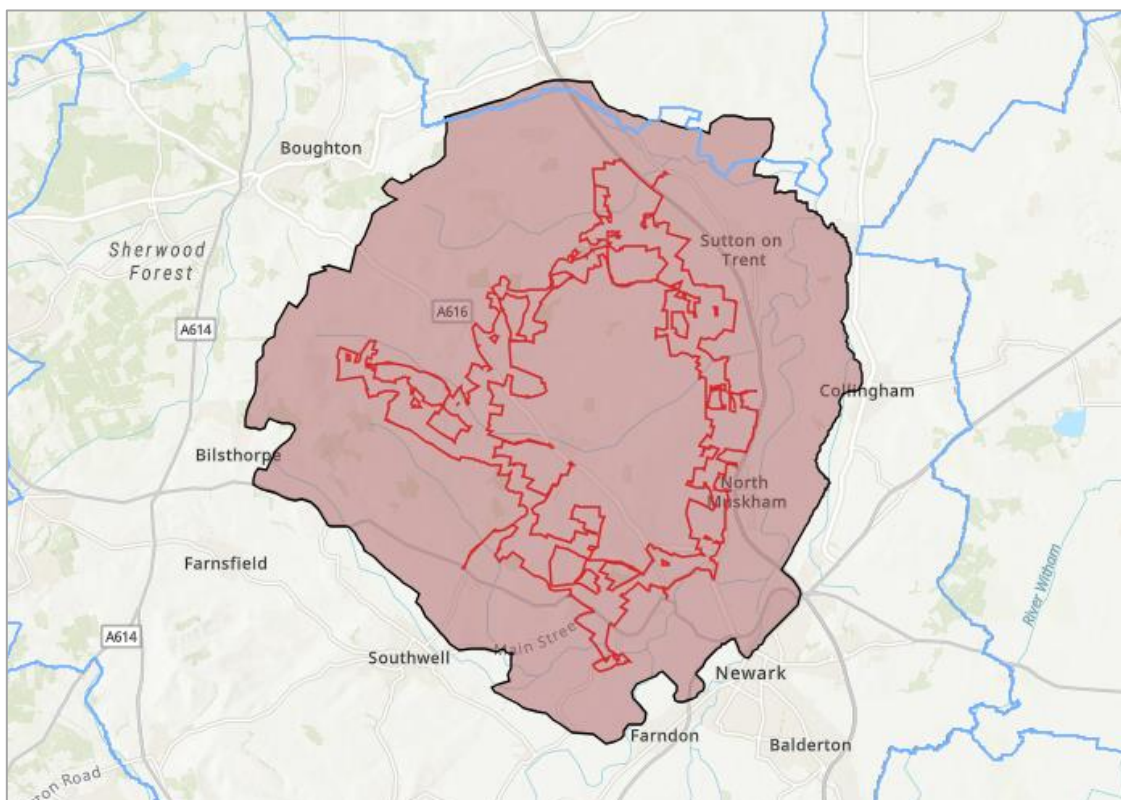


Figure 2. Red-line project boundary and core consultation zone, shown against local authority boundaries.

4.1.7 Information about the Project will be communicated directly to properties within the core consultation zone including residents, local businesses and community organisations (including parish councils), to raise awareness and promote dialogue through the Project communications channels. These include written information materials (community consultation postcard); local and regional media channels; and meetings/briefings (see Section 7). There are approximately 5,900 properties within the core consultation zone.

4.1.8 Consultation information will also be distributed directly to any individuals and organisations who have specifically registered an interest in the project.

4.1.9 In-person information events will be hosted at venues located in the core consultation zone.

#### 4.1.10 Wider consultation area

4.1.11 It is recognised that people who live and work beyond the core consultation zone, while not being directly affected, may have an interest in our proposals and wish to participate in consultation. To make sure they are given the opportunity to participate awareness will be raised in the following ways:

- Directly notify all those people who have registered their interest in the Project about consultation.
- Publicise the consultation by advertising in local media.
- Publish consultation materials online and make them available on request via our contact details.



#### 4.1.12 Seldom heard, hard to reach groups, and wider outreach

4.1.13 Elements Green is committed to ensuring that the consultation process, and associated communications, reach as many parts of the community as possible. We recognise that there are individuals, groups and communities within the core consultation zone for whom there may be certain barriers which could prevent them from fully participating in the consultation - or make them less likely to participate in or respond to traditional consultation techniques.

4.1.14 The Applicant's consultation methodology (see Section 7) has been developed to accommodate communicating as effectively as possible with these groups so they can have their say. Contact will be made with bodies and gateway organisations representing these groups ahead of consultation starting to ensure our approach meets the specific needs of their members. Requests for specific consultation activity to cater for their members will be considered on a case-by-case basis. This will then be agreed and planned with the requesting organisations.

4.1.15 We will contact the following organisations prior to statutory consultation to invite their feedback on our approach to consultation and seek guidance on any actions to further increase accessibility:

Organisation
Nottingham Deaf Society
British Deaf Association
Autistic Nottingham
Autism East Midlands
Disability Nottinghamshire
Royal National Institute of Blind People (RNIB)
My Sight Nottinghamshire
Alzheimer's Society
Newark Link Club for Young People with Disabilities
Hope House School
Wings School Notts
Newark Orchard School
Able Futures
Nottingham Homeless Housing
Nottingham Community Housing Association
Housing Aid
Himmah
Rural Community Action Nottinghamshire
Nottinghamshire Community Foundation
The Farming Community Network
Able Futures
Nottingham Homeless Housing
Nottingham Community Housing Association
Housing Aid
Rural Community Action Nottinghamshire



Nottinghamshire Community Foundation
The Farming Community Network
Friends, Families & Travellers
National Federation of Gypsy Liaison Groups
Rural Community Action Nottinghamshire
Friends, Families & Travellers
National Federation of Gypsy Liaison Groups
Rural Community Action Nottinghamshire
Nottinghamshire Mind
Carers UK
Carers Federation
Young Carers TuVida
Nottinghamshire Carers Hub
Carers UK
Carers Federation
Nottinghamshire Carers Hub
Nottinghamshire Federation of Young Farmers Clubs
Bilthorpe Youth & Community Centre
Notts County Council Youth Voice and Youth Parliament
Nottinghamshire Scouts
Girlguiding Nottinghamshire
Nottinghamshire Army Cadets
Parkinson's Support Group Over The Rainbow

4.1.16 We would any further suggestions from Local Authorities regarding additional groups to include in this contact list.



## **5 WHEN WE WILL CONSULT**

- 5.1.1 The Applicant will hold their Phase Two consultation for a period of six weeks. The timing of consultation will take into account potential conflicting events, such as recognised school and public.
- 5.1.2 This is consistent with the approach taken to the non-statutory Phase One Consultation and exceeds the statutory requirement of 28 days.
- 5.1.3 The Applicant intends to hold their statutory Phase Two Consultation between Wednesday 11 September and Wednesday 23 October.

DRAFT



## 6 WHAT WE WILL CONSULT ON

- 6.1.1 The aim of our pre-application consultation is to ensure that both community and technical consultees have meaningful opportunities to understand and influence Project proposals prior to the submission of a DCO application.
- 6.1.2 Through multiple phases of consultation we are seeking feedback to help develop our proposals. This will include potential issues such as, but not limited to:
- Short term and temporary impacts during construction, such as upon wildlife and local residents.
  - Long term operational impacts, such as upon wildlife, landscape and views.
  - Benefits, such as the opportunity for biodiversity, recreational and other environmental improvements, alongside potential community benefits associated with the Project.
- 6.1.3 Our Phase Two (statutory) Consultation will seek feedback on updated Project proposals that have had regard to feedback received to date.
- 6.1.4 It will include publishing the results of ongoing environmental surveys and studies that have been carried out to date. These will be presented in a Preliminary Environmental Information Report (PEIR) and accompanying Non-Technical Summary (NTS).
- 6.1.5 This will report on any potential significant environmental effects related the Project and how we are intending to manage these.
- 6.1.6 The parameters of the Project, known as the Project Envelope, will be presented through the consultation materials.
- 6.1.7 Our Phase Two Consultation will provide an opportunity to comment on:
- Developed plans which have had regard to the comments received during our Phase One Consultation.
  - Developed design proposals for how the Project could look, including visualisations of the solar farm from local viewpoints.
  - The cable connection between the solar array areas and Staythorpe substation.
  - Suggested mitigation and enhancement measures.
  - Opportunities for community benefits associated with the Project.
  - Our PEIR and PEIR NTS, including but not limited to chapters on landscape and visual impacts, ecology and biodiversity, and hydrology and flood risk.



## **7 HOW WE WILL CONSULT AND HOW RESPONDENTS CAN PARTICIPATE**

- 7.1.1 Throughout the consultation process, we will invite communities and interested parties to view, discuss and comment on our proposals; working to ensure that consultation is effective, so that as many people as possible are given the opportunity to express their views.
- 7.1.2 During our Phase One consultation we utilised a range of methods to provide information about the Project and opportunities to provide feedback to consult with people living and working within vicinity of the Project.
- 7.1.3 While acknowledging that some aspects of the project may be complicated, we will endeavour to continue to conduct consultation in a way that gives anyone interested the opportunity to access information and provide their views.
- 7.1.4 We have identified a number of ways in which people can:
- Access clear and concise information about our proposals and their potential effects to aid constructive debate (this includes making relevant research, project and technical documents available)
  - Provide their views and feedback regarding our proposals.
- 7.1.5 Project website**
- 7.1.6 A dedicated Project website ([www.gnrsolarpark.co.uk](http://www.gnrsolarpark.co.uk)) was launched in October 2023 to host up-to-date Project information. This included hosting consultation materials during our Phase One consultation and several subsequent updates as more information has become available.
- 7.1.7 The dedicated project website will continue to be updated to provide information about the consultation and proposals being consulted on, as well as being a resource for all the project materials which will be available to view and download.
- 7.1.8 It will be possible to submit a response to the consultation via the website using a dedicated online feedback form during the defined consultation period.
- 7.1.9 It will continue provide facility for people to register their contact details with the project so they can receive future updates directly within and beyond defined periods of consultation.
- 7.1.10 Community Consultation Postcard**
- 7.1.11 A consultation postcard will be issued to all properties within the core consultation zone (see Figure 1 in Section 4) and any other parties who registered to be kept informed of the Project by post.
- 7.1.12 The postcard will notify local residents and businesses of the consultation period commencing, their opportunities to find out more information





(including details of public information events), how to provide feedback, and the response deadline for comments to be submitted.

- 7.1.13 The postcard will be printed and posted prior to the Phase Two consultation period commencing.

#### **7.1.14 Community Consultation Leaflet**

- 7.1.15 A Community Consultation Leaflet will be published at the start of the Phase Two Consultation. This will provide a summary of the proposals we are consulting on, details of how people can take part in the consultation, how feedback will be considered and used to influence the shape of our proposals, and how we will provide information on the outcome of this consultation.

- 7.1.16 Printed copies of this document will be available to take away at in-person public information events and Community Access Points, and a digital version will be available to view and download from the project website. Copies will also be made available on request in digital or hard copy format. This document is being provided as a source of information to support the consultation process.

#### **7.1.17 Feedback Form**

- 7.1.18 A feedback form will be developed to enable people to provide feedback on the proposals. Specific questions will guide people on the particular areas on which we are seeking comment, however no questions will be mandatory.

- 7.1.19 An online version of the feedback form will be hosted on the dedicated Project website so that feedback can be provided electronically.

- 7.1.20 Hard copy forms will be available at in-person public information events and at CAP sites. An online version of the feedback form will also be available to download from the Project website. Copies will also be made available on request in digital or hard copy format.

- 7.1.21 While the feedback form is intended to encourage and support the provision of feedback, we recognise some respondents may prefer to provide written comments outside of set questions. Any and all written comments will be accepted and can be submitted during the Phase Two consultation period by post to FREEPOST GNR SOLAR or by email to [info@gnrsolarpark.co.uk](mailto:info@gnrsolarpark.co.uk).

- 7.1.22 In exceptional circumstances, it will be possible to make a representation over the phone. This will be transcribed and agreed verbally prior to submission. This can be done using the dedicated project information phone line (0800 175 4054), which is in place for enquiries. This is staffed from 9.00am – 5.00pm, Monday to Friday (excluding bank holidays), with a voicemail service to receive messages outside of these times.



## **7.2 TECHNICAL DOCUMENTS, MAPS, AND PLANS**

- 7.2.1 The Project PEIR will be published at the start of the Phase Two consultation period. This document will provide details of the Project and environmental assessments undertaken to date.
- 7.2.2 The PEIR will include dedicated chapters on all relevant environmental topics associated with the Project, as determined through the Environmental Impact Assessment Scoping exercise. These chapters will be supported by relevant appendices.
- 7.2.3 The full PEIR will be available to view on the Project website and at public information events.
- 7.2.4 We will endeavour to provide relevant information from the PEIR in hard copy, however charges may have to apply to requests for significant volumes of information to be printed given the anticipated size of the full document.

## **7.3 PUBLIC INFORMATION EVENTS**

- 7.3.1 Public information events will be held during our Phase Two consultation.
- 7.3.2 We intend to schedule these events within the middle of the consultation period. This is to allow time beforehand for the events to be effectively publicised and for interested parties to access and consider consultation information before attending, while also allowing time after events for attendees to prepare and submit feedback ahead of the response deadline. Events are therefore proposed as taking place a minimum of 10 days after the consultation has launched and a minimum of seven days prior to the response deadline.
- 7.3.3 We intend to hold nine public information events during our Phase Two consultation period. These will be held across different days of the week and covering a range of times to accommodate different working hours and care schedules to promote accessibility and attendance. This will include holding an event on a Saturday, subject to venue availability.
- 7.3.4 At events attendees will be able to find information about the project and what we are consulting on. Members of the project team will be present to discuss the proposals and answer questions.
- 7.3.5 In-person information events will be held at venues within the core consultation zone that are publicly accessible and accommodate the needs of individuals with limited mobility. Information available to view at these events will include:
  - Event display panels and screens featuring an interactive map.
  - Community Consultation Leaflet (for reference and to take away).
  - Copies of the Feedback Form (for reference and to take away).
  - The PEIR (for reference only).





7.3.6 Online information events will take the form of a webinar, the date and time of which will be promoted along with the details of the in-person information events being held. Online events will be held on Zoom or Teams with attendees invited to register in advance via the Project website or by contacting the project team if they would like to attend. The format for these events will comprise:

- The presentation of information consistent with that being made available at in-person events i.e. event display panels by representatives from the project team.
- Q&A session whereby people will be invited to submit questions using the chat function so they can be collated and verbally responded to by the project team at the end of the presentation.

7.3.7 An indicative programme of public information events is set out in the table below to show our intended schedule of locations, days and times. Please note that these details will be informed by venue availability and confirmation that they meet our health and safety and capacity requirements. A confirmed schedule of public information events will be included in the final SoCC and published ahead of Phase Two consultation commencing.

7.3.8 Proposed schedule of public information events

Event date (TBC)	Opening time (TBC)	Venue (Proposed)
30/09/2024	TBC	Maplebeck Village Hall
01/10/2024	TBC	Laxton Village Hall
02/10/2024	TBC	Carlton-on-Trent Village Hall
03/10/2024	TBC	Sutton on Trent Sports Club
09/10/2024	TBC	Eakring Cator Hall
10/10/2024	TBC	Newark Town Hall
11/10/2024	TBC	Kelham Hall
12/10/2024	TBC	North Muskham Rural Community Centre
15/10/2024	TBC	Community webinar

## 7.4 AVAILABILITY OF MATERIALS

7.4.1 CAP sites

7.4.2 The table below summarises the availability of consultation materials during the Phase Two consultation period.



Document	In-person information events	Project website*	On request	Direct mailed
<b>GNR PEIR</b>	Y	Y	Charge for full copy	N
<b>Consultation postcard</b>	N	Y	Y	Y
<b>Project information booklet</b>	Y	Y	Y	N
<b>Feedback form</b>	Y	Y	Y	N
<b>Event display panels</b>	Y	Y	N	N

\*Documents and materials will be available as PDFs to view and download free of charge from the 'Documents Library' section of the project website.

7.4.3 The table below indicates where hard copies of this document and relevant Phase Two consultation materials will be available. Due to varying reasons, some public buildings may be accessible by appointment only, or opening times may vary.

Location	Opening times
<b>Newark and Sherwood District Council Offices</b> , Castle House, Great North Road, Newark, Nottinghamshire, NG24 1BY	Monday to Friday: 9am to 5pm
<b>Sutton on Trent Community Partnership Library</b> , Methodist Church Community Hall, Sutton-on-Trent, Newark, Nottinghamshire, NG23 6QA	Tuesday and Friday: 1:30 to 4:30pm Saturday: 9:30am to 12:30pm
<b>Southwell Library</b> , The Bramley Centre, Kind St, Southwell, NG25 0EH	Monday: 9am to 6pm Tuesday, Wednesday and Friday: 9am to 5pm Thursday: 9am to 1pm Saturday: 9am to 3pm Sunday: 11am to 3pm
YMCA Newark and Sherwood and Activity Village, Lord Hawke Way, Newark, NG24 4FH	Monday to Friday: 7am to 10pm Saturday and Sunday: 9am to 5pm



## 8 CONSULTATION REPORTING

- 8.1.1 A Consultation Report will be prepared and submitted to the Planning Inspectorate as part of the application for a Development Consent Order.
- 8.1.2 This Consultation Report will describe the consultation activities undertaken and evidence compliance with the requirements of the 2008 Planning Act and associated guidance, as well as compliance with all commitments and principles set out in the published SoCC.
- 8.1.3 The Consultation Report will also include details of the level of engagement with our consultation activities, such as number of attendees to public information events and the number of feedback submissions received.
- 8.1.4 All feedback received during our Phase Two consultation period will be recorded and analysed. This will be presented in the Consultation Report.
- 8.1.5 Comments will be shared with relevant members of the Project team to inform ongoing refinement of the proposals ahead of the submission of a DCO application.
- 8.1.6 The Applicant's response to feedback received, including whether it has resulted in a change to the Project or the Applicant's evidence, will be described in the Consultation Report, in compliance with Section 49 of the 2008 Planning Act (Duty to take account of responses to consultation and publicity).
- 8.1.7 We anticipate submitting a DCO application for the Project to the Planning Inspectorate in Q2 2025.
- 8.1.8 In accordance with the Planning Inspectorate's Advice Note 14<sup>3</sup>, this application will include a Consultation Report that:
- Describes our consultation process.
  - Explains how we have complied with legal requirements.
  - Details how we have worked with Local Planning Authorities (LPAs) to ensure our consultation is suitable for the area through the proposals set out in this SoCC.
  - Details the feedback and consultation responses we have received.
  - Explains how this feedback has been considered, including where it has influenced our proposals and the information provided in our DCO application.

---

<sup>3</sup> Nationally Significant Infrastructure Projects - Advice Note Fourteen: compiling the consultation report (<https://www.gov.uk/government/publications/nationally-significant-infrastructure-projects-advice-note-fourteen-compiling-the-consultation-report/nationally-significant-infrastructure-projects-advice-note-fourteen-compiling-the-consultation-report>)

## **2 LETTER TO LPAS REGARDING DRAFT STATEMENT OF COMMUNITY CONSULTATION**



19 July 2024

Dear Bassetlaw District Council,

**Great North Road Solar Park: Section 47 Planning Act (2008) Consultation on Draft Statement of Community Consultation with Local Planning Authorities**

Elements Green Trent Ltd ('the Applicant') proposes to construct and operate Great North Road (GNR) Solar Park, a proposed solar photovoltaic (PV) electricity generating facility within the district of Newark and Sherwood and the county of Nottinghamshire.

The proposals for GNR Solar Park have an anticipated potential output from the solar array of over 50 megawatts (MW). Accordingly, it will be classified as a Nationally Significant Infrastructure Project (NSIP) and must comply with the Development Consent Order (DCO) regime as defined in the Planning Act 2008 ('2008 Act').

As part of our duty to consult the local community on the proposals for GNR Solar Park, we have prepared a draft Statement of Community Consultation (SoCC). The draft SoCC outlines how communities can engage throughout the development process and explains how we intend to consult with communities in the vicinity of the project.

Local authorities have an important role in the 2008 Act process. In accordance with Section 47(2) of the 2008 Act, Elements Green is required to consult with host local authorities on the draft SoCC, as set out under Section 43(1) of the 2008 Act. We are seeking the views from local authorities with an administrative boundary that our proposed core consultation zone extends to. Your input will be used to ensure that the people affected by the proposed development can take part in a thorough, accessible, and effective consultation exercise.

Our core consultation zone, shown in Figure 2 of the draft SoCC, extends into your administrative boundary, and therefore, we would welcome your comments on our proposed approach to our upcoming statutory consultation.

We recognise that effective and appropriate consultation is of critical importance to this project. As a local authority, we strongly welcome your local knowledge and insight to advise us on how best to conduct community consultation.



Write to us at:  
FREEPOST GNR SOLAR PARK



Email us at:  
[info@gnrsolarpark.co.uk](mailto:info@gnrsolarpark.co.uk)



Call our Freephone information line:  
0808 175 4054



Visit our website at:  
[www.gnrsolarpark.co.uk](http://www.gnrsolarpark.co.uk)



Section 47(3) of the 2008 Act states that a statutory 28 days for comments must be provided, however, we have extended the timeframe of formal consultation on the draft SoCC by just over a week. This period will commence on the day after the local authority receives the draft SoCC. We kindly request all comments to the draft SoCC to be received **no later than Tuesday 27 August 2024**.

Following receipt of all comments from the local authorities, we will seek to incorporate comments and suggestions and, as required in Section 47(5) of the 2008 Act, demonstrate the regard had to all comments received.

Elements Green intends to publicise the SoCC in October 2024. The SoCC will be publicised across our consultation zone and wider consultation area through local media, local notices and online via our dedicated project website.

Shortly after publicising our SoCC, we intend to launch our Phase Two statutory consultation. This will be further publicised in line with the methods set out in the SoCC, including sending a community consultation postcard to an agreed consultation zone. This will notify local residents and businesses of the consultation period commencing, their opportunities to find out more information (including details of public information events), how to provide feedback, and the response deadline for comments to be submitted.

We invite all comments to the attached draft SoCC to be received no later than **Tuesday 27 August 2024** through the following contact details:

**Project email:** [info@gnrsolarpark.co.uk](mailto:info@gnrsolarpark.co.uk)

**Postal address:** FREEPOST GNR SOLAR

Please do not hesitate to get in contact with the project team at any time using the details provided or via our project Freephone information line: 0808 175 4054.

Kind regards,

The Great North Road Solar Park Project Team



Write to us at:  
FREEPOST GNR SOLAR PARK



Email us at:  
[info@gnrsolarpark.co.uk](mailto:info@gnrsolarpark.co.uk)



Call our Freephone information line:  
0808 175 4054



Visit our website at:  
[www.gnrsolarpark.co.uk](http://www.gnrsolarpark.co.uk)



19 July 2024

Dear Simon and Amy,

**Great North Road Solar Park: Section 47 Planning Act (2008) Consultation on Draft Statement of Community Consultation with Local Planning Authorities**

Elements Green Trent Ltd ('the Applicant') proposes to construct and operate Great North Road (GNR) Solar Park, a proposed solar photovoltaic (PV) electricity generating facility within the district of Newark and Sherwood and the county of Nottinghamshire.

The proposals for GNR Solar Park have an anticipated potential output from the solar array of over 50 megawatts (MW). Accordingly, it will be classified as a Nationally Significant Infrastructure Project (NSIP) and must comply with the Development Consent Order (DCO) regime as defined in the Planning Act 2008 ('2008 Act').

As part of our duty to consult the local community on the proposals for GNR Solar Park, we have prepared a draft Statement of Community Consultation (SoCC). The draft SoCC outlines how communities can engage throughout the development process and explains how we intend to consult with communities in the vicinity of the project.

Local authorities have an important role in the 2008 Act process. In accordance with Section 47(2) of the 2008 Act, Elements Green is required to consult with host local authorities on the draft SoCC, as set out under Section 43(1) of the 2008 Act. We are seeking the views from local authorities with an administrative boundary that our proposed core consultation zone extends to. Your input will be used to ensure that the people affected by the proposed development can take part in a thorough, accessible, and effective consultation exercise.

We recognise that effective and appropriate consultation is of critical importance to this project. As a local authority, we strongly welcome your local knowledge and insight to advise us on how best to conduct community consultation. Building on the initial feedback provided to our consultation methodology shared with you ahead of Phase One Community Consultation, you are invited to comment on any aspect of the draft SoCC you consider appropriate.



Write to us at:  
FREEPOST GNR SOLAR PARK



Email us at:  
[info@gnrsolarpark.co.uk](mailto:info@gnrsolarpark.co.uk)



Call our Freephone information line:  
0800 175 4054



Visit our website at:  
[www.gnrsolarpark.co.uk](http://www.gnrsolarpark.co.uk)



Section 47(3) of the 2008 Act states that a statutory 28 days for comments must be provided, however, we have extended the timeframe of formal consultation on the draft SoCC by just over a week. This period will commence on the day after the local authority receives the draft SoCC. We kindly request all comments to the draft SoCC to be received **no later than Tuesday 27 August 2024**.

Following receipt of all comments from the local authorities, we will seek to incorporate comments and suggestions and, as required in Section 47(5) of the 2008 Act, demonstrate the regard had to all comments received.

Elements Green intends to publicise the SoCC in October 2024. The SoCC will be publicised across our consultation zone and wider consultation area through local media, local notices and online via our dedicated project website.

Shortly after publicising our SoCC, we intend to launch our Phase Two statutory consultation. This will be further publicised in line with the methods set out in the SoCC, including sending a community consultation postcard to an agreed consultation zone. This will notify local residents and businesses of the consultation period commencing, their opportunities to find out more information (including details of public information events), how to provide feedback, and the response deadline for comments to be submitted.

We invite all comments to the attached draft SoCC to be received no later than **Tuesday 27 August 2024** through the following contact details:

**Project email:** [info@gnrsolarpark.co.uk](mailto:info@gnrsolarpark.co.uk)

**Postal address:** FREEPOST GNR SOLAR

Please do not hesitate to get in contact with the project team at any time using the details provided or via our project Freephone information line: 0808 175 4054.

Kind regards,

The Great North Road Solar Park Project Team



Write to us at:  
FREEPOST GNR SOLAR PARK



Email us at:  
[info@gnrsolarpark.co.uk](mailto:info@gnrsolarpark.co.uk)



Call our Freephone information line:  
0808 175 4054



Visit our website at:  
[www.gnrsolarpark.co.uk](http://www.gnrsolarpark.co.uk)





19 July 2024

Dear Stephen and Nina,

**Great North Road Solar Park: Section 47 Planning Act (2008) Consultation on Draft Statement of Community Consultation with Local Planning Authorities**

Elements Green Trent Ltd ('the Applicant') proposes to construct and operate Great North Road (GNR) Solar Park, a proposed solar photovoltaic (PV) electricity generating facility within the district of Newark and Sherwood and the county of Nottinghamshire.

The proposals for GNR Solar Park have an anticipated potential output from the solar array of over 50 megawatts (MW). Accordingly, it will be classified as a Nationally Significant Infrastructure Project (NSIP) and must comply with the Development Consent Order (DCO) regime as defined in the Planning Act 2008 ('2008 Act').

As part of our duty to consult the local community on the proposals for GNR Solar Park, we have prepared a draft Statement of Community Consultation (SoCC). The draft SoCC outlines how communities can engage throughout the development process and explains how we intend to consult with communities in the vicinity of the project.

Local authorities have an important role in the 2008 Act process. In accordance with Section 47(2) of the 2008 Act, Elements Green is required to consult with host local authorities on the draft SoCC, as set out under Section 43(1) of the 2008 Act. We are seeking the views from local authorities with an administrative boundary that our proposed core consultation zone extends to. Your input will be used to ensure that the people affected by the proposed development can take part in a thorough, accessible, and effective consultation exercise.

We recognise that effective and appropriate consultation is of critical importance to this project. As a local authority, we strongly welcome your local knowledge and insight to advise us on how best to conduct community consultation.

Section 47(3) of the 2008 Act states that a statutory 28 days for comments must be provided, however, we have extended the timeframe of formal consultation on the draft SoCC by just over a week. This period will commence on the day after the local authority receives the draft SoCC. We kindly request all comments to the draft SoCC to be received **no later than Tuesday 27 August 2024**.



Write to us at:  
FREEPOST GNR SOLAR PARK



Email us at:  
[info@gnrsolarpark.co.uk](mailto:info@gnrsolarpark.co.uk)



Call our Freephone information line:  
0808 175 4054



Visit our website at:  
[www.gnrsolarpark.co.uk](http://www.gnrsolarpark.co.uk)



Following receipt of all comments from the local authorities, we will seek to incorporate comments and suggestions and, as required in Section 47(5) of the 2008 Act, demonstrate the regard had to all comments received.

Elements Green intends to publicise the SoCC in October 2024. The SoCC will be publicised across our consultation zone and wider consultation area through local media, local notices and online via our dedicated project website.

Shortly after publicising our SoCC, we intend to launch our Phase Two statutory consultation, This will be further publicised in line with the methods set out in the SoCC, including sending a community consultation postcard to an agreed consultation zone. This will notify local residents and businesses of the consultation period commencing, their opportunities to find out more information (including details of public information events), how to provide feedback, and the response deadline for comments to be submitted.

We invite all comments to the attached draft SoCC to be received no later than **Tuesday 27 August 2024** through the following contact details:

**Project email:** [info@gnrsolarpark.co.uk](mailto:info@gnrsolarpark.co.uk)

**Postal address:** FREEPOST GNR SOLAR

Please do not hesitate to get in contact with the project team at any time using the details provided or via our project Freephone information line: 0808 175 4054.

Kind regards,

The Great North Road Solar Park Project Team



Write to us at:  
FREEPOST GNR SOLAR PARK



Email us at:  
[info@gnrsolarpark.co.uk](mailto:info@gnrsolarpark.co.uk)



Call our Freephone information line:  
0808 175 4054



Visit our website at:  
[www.gnrsolarpark.co.uk](http://www.gnrsolarpark.co.uk)

### **3 PUBLISHED STATEMENT OF COMMUNITY CONSULTATION**



---

December 2024

# Great North Road Solar and Biodiversity Park

Statement of Community Consultation



# Contents

1. Background	4
2. Our Consultation Process	6
3. Method of Consultation	7
4. Who Will We Consult	8
5. When We Will Consult	12
6. What We Will Consult On	12
7. How We Will Consult and How Respondents Can Participate	13
8. Consultation Reporting	19

## Figures

Figure 1: Site location plan	5
Figure 2: Red-line Project boundary and core consultation zone, shown against local authority boundaries	9

## Tables

Table 1: Gateway organisations representing potentially seldom heard groups	11
Table 2: Location, date and time of information events for Phase Two Consultation	16
Table 3: Community Access Points	17
Table 4: Availability of consultation materials	18





1. Background

- 1.1.

Elements Green Trent Ltd (“the Applicant”) is bringing forward proposals for Great North Road Solar and Biodiversity Park (“the Project”) located to the north west of Newark in Nottinghamshire.
- 1.2.

With a potential generation capacity of around 800 megawatts (MW), the Project has the potential to meet the power needs of circa 400,000 homes.
- 1.3.

The Project will connect into National Grid’s existing Staythorpe substation.
- 1.4.

As the Project’s anticipated generation capacity exceeds 50MW it is classified as a Nationally Significant Infrastructure Project (NSIP). This means it requires a development consent order (DCO) under the Planning Act 2008 (PA 2008). The PA 2008 requires promoters of NSIPs to carry out a formal phase of consultation referred to as a ‘Statutory Consultation’ to take place over a minimum of 28 days.
- 1.5.

Prior to this statutory phase of consultation, and in accordance with Section 47 of the PA 2008, consultation has been sought on a draft Statement of Community Consultation (SoCC) with the host Local Planning Authorities (LPAs). These authorities comprise:

1.5.1.

Newark and Sherwood District Council

1.5.2.

Nottinghamshire County Council

1.5.3.

Bassetlaw District Council
- 1.6.

The Applicant has a statutory duty to have regard to the responses received on the draft SoCC in preparing the final SoCC for publication. This is in accordance with Section 47 (5) of the Planning Act (hereafter referred to as the ‘PA 2008’).
- 1.7.

This document is available to view and download via our website ([www.gnrsolarpark.co.uk](http://www.gnrsolarpark.co.uk)), has been directly emailed to identified key stakeholders and those who have registered to be kept informed, with hard copies available on request, and for collection at public venues as described in **Table 4**.
- 1.8.

Statutory consultation will be undertaken in accordance with the methodology and commitments set out in the SoCC as published.
- 1.9.

Prior to this statutory phase of consultation, the Applicant has already undertaken non-statutory consultation and engagement (Phase One Consultation) to inform the emerging proposals for Great North Road Solar and Biodiversity Park. This included a successful six-week phase of consultation held between Tuesday 16 January 2024 to Tuesday 27 February 2024.
- 1.10.

The aim of Phase One Consultation was to introduce The Applicant and the overall Project, share information about the emerging proposals and give individuals and interested parties an early opportunity to have their say and share their views and local knowledge.

- 1.11.

The Applicant’s Phase One Consultation involved welcoming over 550 people to a series of information events and formally receiving over 250 pieces of feedback. The Applicant’s feedback form invited comments and views on our methods of consultation, and through this, the majority of respondents indicated they found the consultation materials to be informative, a postcard was the most effective method to publicise the opportunities to provide feedback, and the importance of providing information both online and in-person was emphasised.
- 1.12.

The feedback received during this initial consultation has informed and shaped the ongoing design development and evolution of the proposal.
- 1.13.

Experience from Phase One Consultation has also informed the approach to statutory consultation, as set out in this SoCC.

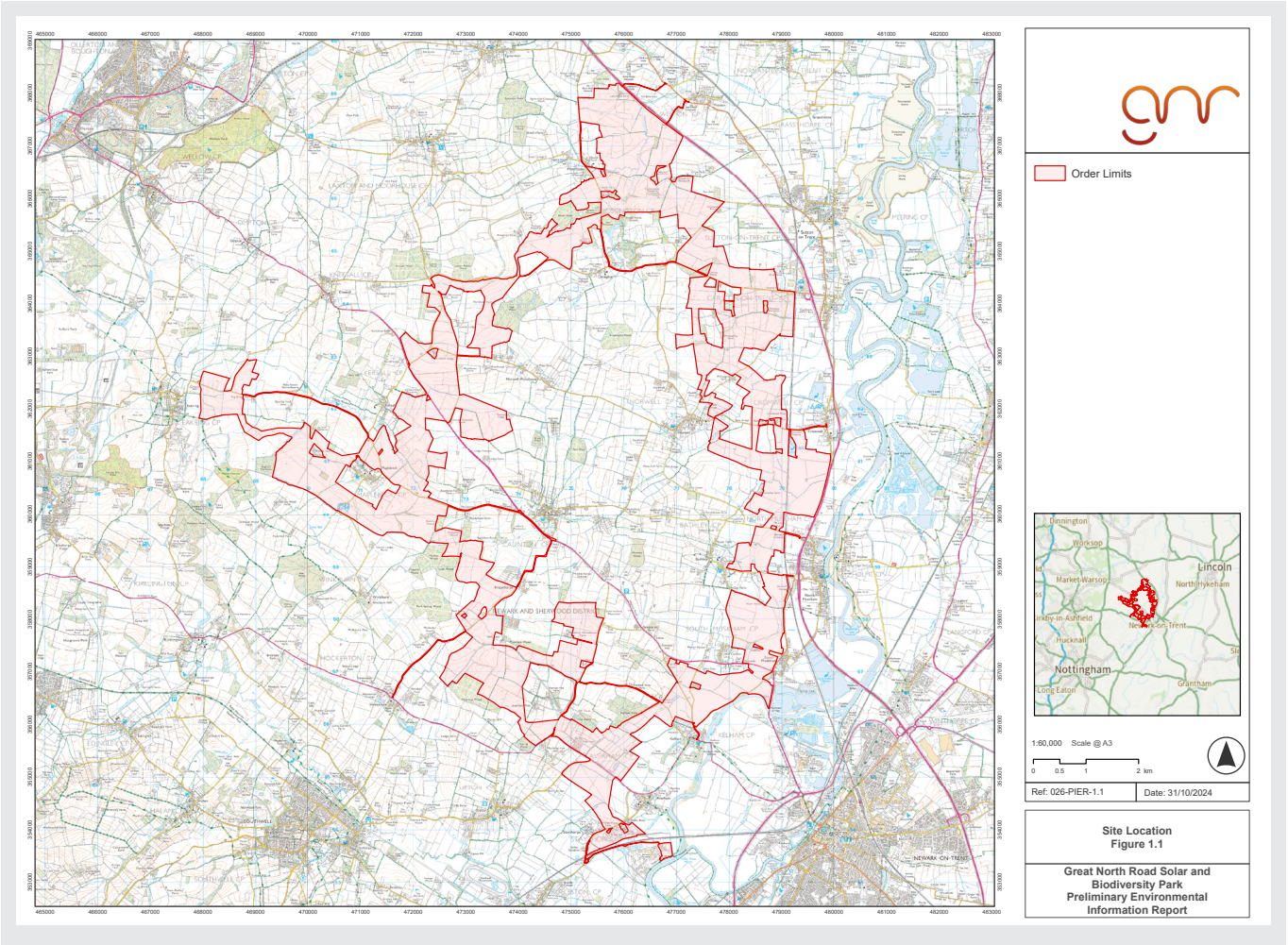


Figure 1: Site location plan



2. Our Consultation Process

- 2.1. The approach is an iterative two-phase consultation process for the Project whereby feedback and information received in response to consultation will inform the refinement of the Project design and options.

2.2. This includes:

2.2.1. **Phase One (non-statutory) Consultation**, which was held between 16 January and 27 February 2024 to:
  - Introduce the proposals and the Applicant.
  - Seek initial feedback on the Project and emerging proposal to inform design refinement.
  - Identify local schemes or initiatives the Project could support or deliver to benefit those communities closest to the Project.
  - Understand any opportunities to improve consultation methods ahead of Phase Two (statutory) Consultation.

2.2.2. **Phase Two (statutory) Consultation**, will be held for six weeks between 09 January and 20 February 2025 to provide further information on:
  - Our proposals for the Project as a whole, including a masterplan indicating the proposed layout.
  - The PEIR, setting out potential impacts and accompanying mitigation.
  - Potential opportunities for community benefits associated with the Project.
  - Anything else consultees and communities would like us to consider. This applies to the short term during construction and the long term operation of the Project.

2.3. Prior to commencing Phase One Consultation, the Applicant shared a draft methodology with the Local Planning Authorities of Newark and Sherwood District Council and Nottinghamshire County Council for their review.

2.4. In carrying out Phase One Consultation on the emerging proposals for the Project, the Applicant sought to help stakeholders and local communities understand the Project sufficiently, what it could mean for them (including potential benefits), and how they can become involved at the pre-application stage of the development process.

2.5. Experience of the Phase One Consultation – such as attendance at public information events and the levels and format of feedback received – has also been considered by the Applicant when preparing their approach to statutory consultation.

2.6. The Project team has considered all feedback received during Phase One Consultation in depth. This process has informed further updates to the proposals for the Project.

2.7. The Applicant published updated early visual amenity changes in March 2024 to demonstrate specific changes to landscape plans in response to feedback received. In most cases this involved panels being removed and in one case a substation has been relocated.

2.8. Further to this, the Applicant published a Consultation Summary Report (CSR) in Summer 2024. The purpose of the CSR is to present the feedback received to the Phase One Consultation, and explain transparently how this is being considered by the Project team. The CSR was published on our website and its availability was publicised through notifying consultees and community members.

2.9. The Applicant is now preparing to undertake a statutory phase of consultation, as described in this SoCC.

2.10. Following this, a Consultation Report will be submitted to the Planning Inspectorate as part of the Project Development Consent Order (DCO) application. The Consultation Report will describe and evidence consultation undertaken, the level of engagement with this consultation, and how consideration has been given to feedback received.
- STATEMENT OF COMMUNITY CONSULTATION
- 7
3. Method of Consultation
- 3.1. Elements Green Trent Ltd is fully committed to good practice in public consultation. Consultation for the Project has been informed by the latest government guidance for Nationally Significant Infrastructure Projects, published in April 2024. The latest guidance on the pre-application stage for NSIPs can be found via this link: <https://www.gov.uk/guidance/planning-act-2008-pre-application-stage-for-nationally-significant-infrastructure-projects>. We are committed to ensuring that the consultation process and associated communications are well publicised and accessible.

3.2. It is necessary to employ a variety of consultation methods so that our consultation is appropriate and accessible to all those people who wish to participate. The methodology we have developed has had regard to the experience of the team in delivering non-statutory consultation on Great North Road Solar and Biodiversity Park. The Statements of Community Involvement (SCI) adopted by the relevant local authorities<sup>1</sup> have also been reviewed and considered. The methodology utilises a range of tools and techniques to ensure all identified stakeholders are effectively consulted and involved in the Project development process.

3.3. These tools and techniques will include:

3.3.1. Project specific freephone, email and freepost address.

3.3.2. Project website.

3.3.3. In-person and virtual meetings and presentations.

3.3.4. Direct mail of consultation information to properties within the defined core consultation zone (**see Section 4: Who We Will Consult**).

3.3.5. Information posters, issued for display at public venues within the core consultation zone.

3.3.6. Use of local print and online media – editorial and advertising.

3.3.7. Use of social media to publicise consultation opportunities, including the Great North Road Solar and Biodiversity Park Facebook page and preparing information to be shared via external existing social media channels.

3.3.8. In-person information events at publicly accessible locations.

3.3.9. Virtual webinar format information event.

3.3.10. Provision of information in alternative languages and formats by request and as necessary.

3.3.11. Working with local authorities and parish councils.

3.4. The Great North Road Solar and Biodiversity Park Facebook page will be used to broadcast details of the community consultation and provide updates on key milestones throughout the development of our proposals. Please note, that whilst this page will be monitored by the Project team, all formal feedback and questions about the Project should be submitted through our communications channels. This is to ensure that comments and questions can be fully recorded and responded to efficiently by our team as part of our development process.

3.5. For further details please **see Section 7** ‘How we will consult and how respondents can participate’.

3.6. The information and materials we will use to inform the consultation will provide details of:

3.6.1. The extent of the Project, referred to as the Order Limits.

3.6.2. Environmental information, including the findings from ongoing assessments and the Preliminary Environmental Information Report (PEIR), which includes descriptions of potential effects arising from the Project, and proposals for how these could be managed.

3.6.3. A proposed design, setting out:
  - Areas for solar PV and electrical infrastructure.
  - Areas for mitigation and enhancement measures.
  - Cable routes.

<sup>1</sup> <https://www.newark-sherwooddc.gov.uk/statementcommunityinvolvement/>

<https://www.nottinghamshire.gov.uk/planning-and-environment/minerals-and-waste-planning-policy/statement-of-community-involvement>

<https://www.bassetlaw.gov.uk/planning-and-building/planning-services/planning-policy/planning-policy-documents/statement-of-community-involvement-sci/>

# 4. Who We Will Consult

- 4.1. Anyone interested in the proposals for Great North Road Solar and Biodiversity Park is encouraged to take part in consultation.
- 4.2. In accordance with Section 47 of the PA 2008, the Applicant will consult people living in the vicinity of the land to ensure that communities within the vicinity of the proposals are aware of consultation opportunities. There is no set rule that defines those people, groups or organisations falling into this category.
- 4.3. To help determine the areas where we will consult, professional judgement has been adopted and considered based on common practice, potential effects, and existing infrastructure.
- 4.4. The Statements of Community Involvement (SCI) adopted by the Local Planning Authorities, within whose boundaries our proposed Project lies, have been considered<sup>2</sup>. This helped determine the zone within which each undertake formal consultation, in respect of major development proposals.

## Core consultation zone

- 4.5. The Applicant has defined a core consultation zone in consideration of the above. The zone was defined by initially extending a minimum distance of two kilometres from the boundary of the solar areas and one kilometre from the edge of the cable route corridor and other areas, including substation areas. Where proportionate and reasonable, the zone has then been extended further subject to consideration of:
  - 4.5.1. Existing natural and human geographical boundaries, for example railway lines, A-roads and/or motorways, River Trent.
  - 4.5.2. Avoiding splitting communities.
  - 4.5.3. Coverage of the host district council wards and parishes.
  - 4.5.4. Where we propose to undertake additional works to enable construction transport, equipment areas or road modifications.

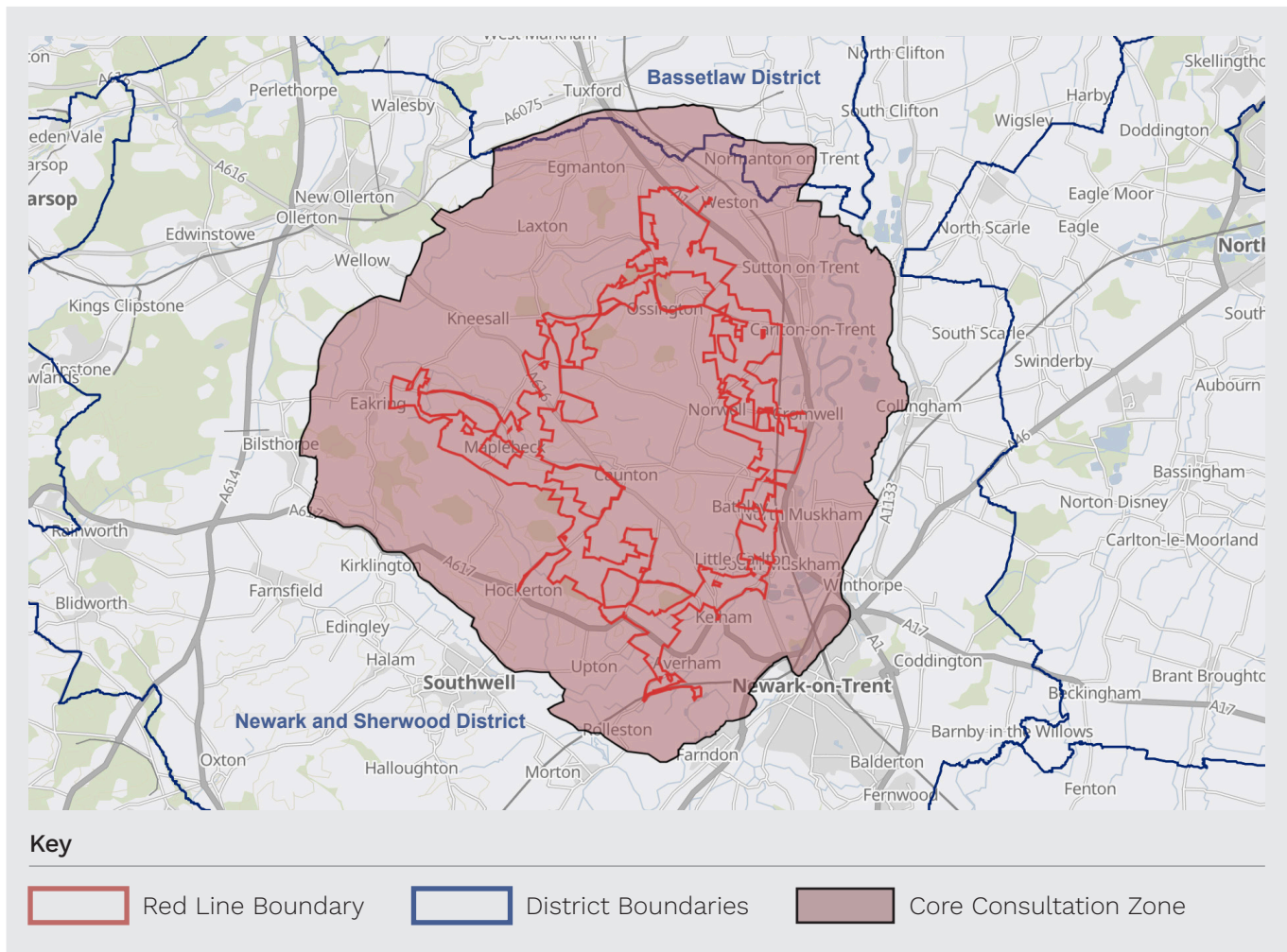


Figure 2: Red-line Project boundary and core consultation zone, shown against local authority boundaries

- 4.6. Information about the Project will be communicated directly to properties within the core consultation zone including residents, local businesses and community organisations (including parish councils), to raise awareness and promote dialogue through the Project communications channels. These include written information materials (community consultation postcard); local and regional media channels; and meetings/briefings (see Section 7). There are approximately 5,900 properties within the core consultation zone.
- 4.7. Consultation information will also be distributed directly to any individuals and organisations who have specifically registered an interest in the Project.
- 4.8. In-person information events will be hosted at venues located in the core consultation zone.

<sup>2</sup> The SCI adopted by those local authorities affected by the Project do not have a predetermined distance from a proposed site within which they consult. Consultation zones are rather determined on a case-by-case basis identifying the nearest affected properties.



Wider consultation zone

- 4.9. It is recognised that people who live and work beyond the core consultation zone, while not being directly affected, may have an interest in our proposals and wish to participate in consultation. To make sure they are given the opportunity to participate awareness will be raised in the following ways:
- 4.9.1. Directly notify all those people who have registered their interest in the Project about consultation.
  - 4.9.2. Publicise the consultation by advertising in local media.
  - 4.9.3. Publish consultation materials online via our website and make them available on request via our contact details.

Seldom heard, hard to reach groups, and wider outreach

- 4.10. The Applicant is committed to ensuring that the consultation process, and associated communications, reach as many parts of the community as possible. We recognise that there are individuals, groups and communities within the core consultation zone for whom there may be certain barriers which could prevent them from fully participating in the consultation - or make them less likely to participate in or respond to traditional consultation techniques.
- 4.11. The Applicant’s consultation methodology (**see Section 7**) has been developed to accommodate communicating as effectively as possible with these groups so they can have their say. Requests for specific consultation activity to cater for their members will be considered on a case-by-case basis. This will then be agreed and planned with the requesting organisations.

- 4.12. As part of Phase Two (statutory) Consultation, we will contact the following organisations to invite their feedback on our updated proposals for Great North Road Solar and Biodiversity Park:

Organisation
Nottingham Deaf Society
British Deaf Association
Autistic Nottingham
Autism East Midlands
Disability Nottinghamshire
Royal National Institute of Blind People (RNIB)
My Sight Nottinghamshire
Alzheimer’s Society
Newark Link Club for Young People with Disabilities
Hope House School
Wings School Notts
Newark Orchard School
Able Futures
Nottingham Homeless Housing
Nottingham Community Housing Association
Himmah
Rural Community Action Nottinghamshire
Nottinghamshire Community Foundation
The Farming Community Network
Nottingham Homeless Housing
Housing Aid
Rural Community Action Nottinghamshire
Nottinghamshire Community Foundation
The Farming Community Network
National Federation of Gypsy Liaison Groups
Rural Community Action Nottinghamshire
Friends, Families & Travellers

Organisation
National Federation of Gypsy Liaison Groups
Rural Community Action Nottinghamshire
Nottinghamshire Mind
Carers UK
Carers Federation
Young Carers TuVida
Nottinghamshire Carers Hub
Nottinghamshire Federation of Young Farmers Clubs
Bilsthorpe Youth & Community Centre
Notts County Council Youth Voice and Youth Parliament
Nottinghamshire Scouts
Girlguiding Nottinghamshire
Nottinghamshire Army Cadets
Parkinson’s Support Group Over The Rainbow

Table 1: Gateway organisations representing potentially seldom heard groups

## 5. When We Will Consult

- 5.1. The Applicant will hold their Phase Two Consultation for a period of six weeks. The timing of consultation has taken into account potential conflicting events, such as recognised school and public holidays.
- 5.2. This is consistent with the approach taken to the non-statutory Phase One Consultation and exceeds the statutory requirement of 28 days.
- 5.3. Our Phase Two Consultation is going to take place between Thursday 09 January 2025 and 20 February 2025.
- 5.4. Please **see Table 2** for a schedule of public information events to be held during Phase Two Consultation.

## 6. What We Will Consult On

- 6.1. The aim of our pre-application consultation is to ensure that both community and technical consultees have meaningful opportunities to understand and influence Project proposals prior to the submission of a DCO application.
- 6.2. Through multiple phases of consultation we are seeking feedback to help develop our proposals. This provides opportunities to provide feedback on proposals at an initial stage and then provide further feedback on more developed proposals.
- 6.3. Our Phase Two (statutory) Consultation will seek feedback on updated Project proposals that have had regard to feedback received to date.
- 6.4. It will include publishing the results of ongoing environmental surveys and preliminary assessments of likely significant effects, and studies that have been carried out to date. These will be presented in a Preliminary Environmental Information Report (PEIR) and accompanying Non-Technical Summary (NTS).
- 6.5. This will report on any potential significant environmental effects related to the Project and how we are intending to manage these.
- 6.6. The parameters of the Project, known as the Project Envelope, will be presented through the consultation materials.
- 6.7. Our Phase Two Consultation will provide an opportunity to comment on:
  - 6.7.1. Our proposals for the Project as a whole, including a masterplan indicating the proposed layout;
  - 6.7.2. The PEIR setting out potential impacts and accompanying mitigation;
  - 6.7.3. Potential opportunities for community benefits associated with the Project; and,
  - 6.7.4. Anything else consultees and communities would like us to consider. This applies to the short term during construction and the long term operation of the Project.

## 7. How We Will Consult and How Respondents Can Participate

- 7.1. Throughout the consultation process, we will invite communities and interested parties to view, discuss and comment on our proposals; working to ensure that consultation is effective, so that as many people as possible are given the opportunity to express their views.
- 7.2. During our Phase One Consultation we used a range of methods to provide information about the Project and the opportunities to provide feedback.
- 7.3. While acknowledging that some aspects of the Project may be complicated, we will endeavour to continue to conduct consultation in a way that gives anyone interested the opportunity to access information and provide their views.
- 7.4. We have identified a number of ways in which people can:
  - 7.4.1. Access clear and concise information about our proposals and their potential effects to aid constructive debate (this includes making relevant research, Project and technical documents available).
  - 7.4.2. Provide their views and feedback regarding our proposals.
- 7.5. A dedicated Project website (www.gnrsolarpark.co.uk) was launched in October 2023 to host up-to-date Project information. This included hosting consultation materials during our Phase One Consultation and several subsequent updates as more information has become available.
- 7.6. The dedicated Project website will continue to be updated to provide information about the consultation and proposals being consulted on, as well as being a resource for all the Project materials which will be available to view and download.
- 7.7. It will be possible to submit a response to the consultation via the website using a dedicated online feedback form during the defined consultation period.
- 7.8. It will continue to provide a facility for people to register their contact details with the Project so they can receive future updates directly within and beyond defined periods of consultation.
- 7.9. A consultation postcard will be issued to all properties within the core consultation zone (**see Figure 2 in Section 4**) and to any other parties who registered to be kept informed about the Project by post.
- 7.10. The postcard will notify local residents and businesses of the consultation period commencing, their opportunities to find out more information (including details of public information events), how to provide feedback, and the response deadline for comments to be submitted.
- 7.11. The postcard will be sent to the core consultation zone on or before the launch of Phase Two Consultation.

### Community Consultation Postcard

### Project website



Central Booklet

- 7.12. A Central Booklet will be published at the start of the Phase Two Consultation. This will provide a summary of the proposals we are consulting on, details of how people can take part in the consultation, how feedback will be considered and used to influence the shape of our proposals, and how we will provide information on the outcome of this consultation.
- 7.13. Printed copies of this document will be available to take away at in-person public information events and Community Access Points (CAP), and a digital version will be available to view and download from the Project website. Copies will also be made available on request in digital or hard copy format. This document is being provided as a source of information to support the consultation process.

Feedback Form

- 7.14. A feedback form will be developed to enable people to provide feedback on the proposals. Specific questions will guide people on the particular areas on which we are seeking comment, however no questions will be mandatory.
- 7.15. An online version of the feedback form will be hosted on the dedicated Project website so that feedback can be provided electronically.
- 7.16. Hard copy forms will be available at in-person public information events and at Community Access Points. An online version of the feedback form will also be available to download from the Project website. Copies will also be made available on request in digital or hard copy format.
- 7.17. While the feedback form is intended to encourage and support the provision of feedback, we recognise some respondents may prefer to provide written comments outside of set questions. Any and all written comments will be accepted and can be submitted during the Phase Two Consultation period by post to FREEPOST GNR SOLAR or by email to [info@gnrsolarpark.co.uk](mailto:info@gnrsolarpark.co.uk).

- 7.18. In exceptional circumstances, it will be possible to make a representation over the phone. This will be transcribed and agreed verbally prior to submission. This can be done using the dedicated Project information phone line 0808 175 4054, which is in place for enquiries. This is staffed from 9.00am – 5.00pm, Monday to Friday (excluding bank holidays), with a voicemail service to receive messages outside of these times.

Technical Documents, Maps, and Plans

- 7.19. The Project Preliminary Environmental Information Report (PEIR) will be published at the start of the Phase Two Consultation period. This document will provide details of the Project and environmental assessments undertaken to date.
- 7.20. The PEIR will include dedicated chapters on all topics considered to give rise to likely significant environmental effects associated with the Project, as determined through the Planning Inspectorate Scoping Opinion. These chapters will be supported by relevant appendices.
- 7.21. The full PEIR will be available to view on the Project website and at public information events.
- 7.22. We will endeavour to provide relevant information from the PEIR in hard copy, however, please note that there will be a charge of up to £500 for hard copies of the full PEIR.

Public Information Events

- 7.23. Public information events will be held during our Phase Two Consultation.
- 7.24. Information events will be held within the middle of the consultation period. This is to allow time beforehand for the events to be effectively publicised and for interested parties to access and consider consultation information before attending, while also allowing time after events for attendees to prepare and submit feedback ahead of the response deadline. Events are therefore going to take place a minimum of 10 days after the consultation has launched and a minimum of eight days prior to the response deadline.
- 7.25. We will hold nine public information events during our Phase Two Consultation. These will be held across different days of the week and cover a range of times to accommodate different working hours and care schedules to promote accessibility and attendance. This includes holding an event on a Saturday.
- 7.26. At events attendees will be able to find out information about the Project and what we are consulting on. Members of the Project team will be present to discuss the proposals and answer questions.
- 7.27. In-person information events will be held at venues that are publicly accessible and accommodate the needs of individuals with limited mobility. Information available to view at these events will include:
  - 7.27.1. Event display panels and screens.
  - 7.27.2. Central Booklet (for reference and to take away).
  - 7.27.3. Copies of the Feedback Form (for reference and to take away).
  - 7.27.4. The PEIR NTS (for reference only).

- 7.28. An online information event will take the form of a webinar. This online event will be held on Zoom or Teams with attendees invited to register in advance via the Project website or by contacting the Project team if they would like to attend. The format for these events will comprise:
  - 7.28.1. The presentation of information consistent with that being made available at in-person events i.e. event display panels by representatives from the Project team.
  - 7.28.2. Q&A session whereby people will be invited to submit questions using the chat function so they can be collated and verbally responded to by the Project team at the end of the presentation.
- 7.29. A programme of public information events is set out on the following page (**Table 2**) to show the schedule of locations, dates and times.

Information Events

Location	Date & Time
<b>Maplebeck Village Hall</b> Main Street, Maplebeck, Newark, NG22 0BS	<b>Thursday 23rd January</b> 2pm - 7:30pm
<b>Sutton on Trent Sports Club</b> Grassthorne Rd, Sutton on Trent, Newark, NG23 6QX	<b>Friday 24th January</b> 2pm - 7:30pm
<b>North Muskham Rural Community Centre</b> North Muskham, Newark, NG23 6HL	<b>Saturday 25th January</b> 11am - 3pm
<b>Laxton Village Hall</b> High St, Laxton, Newark, NG22 0NX	<b>Wednesday 29th January</b> 2pm - 7:30pm
<b>Kelham House Country Manor</b> Main Street, Kelham, Newark, NG23 5QP	<b>Thursday 30th January</b> 11am - 3pm
<b>Carlton on Trent Village Hall</b> Main Street, Carlton-on-Trent, Newark, NG23 6NW	<b>Friday 31st January</b> 2pm - 7:30pm
<b>Eakring Cator Hall</b> Kirklington Road, Eakring, Newark, NG22 0DA	<b>Tuesday 4th February</b> 2pm - 6:30pm
<b>Newark Town Hall</b> Newark, Nottinghamshire, NG24 1DU	<b>Wednesday 5th February</b> 11am - 3pm
<b>Online Community Webinar</b> Zoom	<b>Monday 10th February</b> 5:30pm - 7:00pm

Table 2: Location, date and time of information events for Phase Two Consultation

Community Access Points

- 7.30. Community Access Points (CAP) are deposit locations where we will make hard copies of this document and relevant Phase Two Consultation materials available.
- 7.31. The table below indicates where the relevant Phase Two Consultation materials will be made available. Due to varying reasons, some public buildings may be accessible by appointment only, or opening times may vary.

Location	Current opening times *
<b>Newark and Sherwood District Council Offices,</b> Castle House, Great North Road, Newark, Nottinghamshire, NG24 1BY	<b>Monday to Friday:</b> 9am - 5pm
<b>Southwell Library,</b> The Bramley Centre, King St, Southwell, NG25 0EH	<b>Monday:</b> 9am - 6pm <b>Tuesday, Wednesday and Friday:</b> 9am - 5pm <b>Thursday:</b> 9am - 1pm <b>Saturday:</b> 9am - 3pm <b>Sunday:</b> 11am - 3pm
<b>Newark Library,</b> Beaumont Gardens, Balderton Gate, Newark, NG24 1UW	<b>Monday, Wednesday:</b> 9am - 6:30pm <b>Tuesday, Thursday, Friday:</b> 9am - 6pm <b>Saturday:</b> 9am - 4pm
<b>Ollerton Library,</b> Forest Rd, New Ollerton, Newark, NG22 9PL	<b>Monday, Friday:</b> 9am - 1pm, 1:30pm - 5:30pm <b>Tuesday:</b> 9am - 1pm <b>Wednesday:</b> 2pm - 5:30pm <b>Saturday:</b> 9am - 12:30pm
*Current opening times, subject to change by the venue.	

Table 3: Community Access Points

Availability of Materials

7.32. The table below summarises the availability of consultation materials during the Phase Two Consultation period.

Document	In-person information events	Project website*	On request	Direct mailed	Community Access Points
GNR PEIR	Y	Y	Charge for full copy	N	N
PEIR NTS	Y	Y	Charge for full copy	N	Y
Consultation postcard	N	Y	Y	Y	N
Central booklet	Y	Y	Y	N	Y
Feedback form	Y	Y	Y	N	Y
Event display panels	Y	Y	N	N	N
SoCC	Y	Y	Y	N	Y

*\*Documents and materials will be available as PDFs to view and download free of charge from the ‘Documents Library’ section of the Project website.*

Table 4: Availability of consultation materials

8. Consultation Reporting

- 8.1.

A Consultation Report will be prepared and submitted to the Planning Inspectorate as part of the application for a Development Consent Order.
- 8.2.

This Consultation Report will describe the consultation activities undertaken and evidence compliance with the requirements of the PA 2008 and associated guidance, as well as compliance with all commitments and principles set out in the published SoCC.
- 8.3.

The Consultation Report will also include details of the level of engagement with our consultation activities, such as number of attendees to public information events and the number of feedback submissions received.
- 8.4.

All feedback received during our Phase Two Consultation period will be recorded and analysed. This will be presented in the Consultation Report.
- 8.5.

Comments will be shared with relevant members of the Project team to inform ongoing refinement of the proposals ahead of the submission of a DCO application. This will include sharing feedback on the PEIR to inform the completion of the Environment Statement which will form part of the DCO application.
- 8.6.

The Applicant’s response to feedback received, including whether it has resulted in a change to the Project or the Applicant’s evidence, will be described in the Consultation Report, in compliance with Section 49 of the PA 2008 (Duty to take account of responses to consultation and publicity).
- 8.7.

We anticipate submitting a DCO application for the Project to the Planning Inspectorate in Q3 2025.
- 8.8.

In accordance with the Planning Inspectorate’s Advice Note 14, this application will include a Consultation Report that:

8.8.1.

Describes our consultation process.

8.8.2.

Explains how we have complied with legal requirements.

8.8.3.

Details how we have worked with Local Planning Authorities (LPAs) to ensure our consultation is suitable for the area through the proposals set out in this SoCC.

8.8.4.

Details the feedback and consultation responses we have received.

8.8.5.

Explains how this feedback has been considered, including where it has influenced our proposals and the information provided in our DCO application.

# Contact Us

We want to keep you informed and hear your views on Great North Road Solar and Biodiversity Park.

We have established dedicated communication lines for the Project, which will be active for the duration of consultation on GNR Solar and Biodiversity Park. You can get in touch with members of our stakeholder engagement team using any of the communication lines listed below:



**Email:** [info@gnrsolarpark.co.uk](mailto:info@gnrsolarpark.co.uk)



**Call:** Freephone 0808 175 4054



**Write:** FREEPOST GNR SOLAR



**Visit:** [www.gnrsolarpark.co.uk](http://www.gnrsolarpark.co.uk)



## **4 EVIDENCE OF FINAL SOCC HOSTED ON WEBSITE DOCUMENT LIBRARY**

## Documents

This is where you can find all project documentation, ordered from most recent to least.

### Phase Two Consultation documents

- [Central Booklet](#) - January 2025
- [Feedback Form](#) - January 2025
- [Exhibition Materials](#) - January 2025
- [Postcard](#) - January 2025
- [Poster](#) - January 2025
- [S4B Notice](#) - January 2025
- [Site Location Plan](#) - January 2025
- [Masterplan Overview](#) - January 2025
- [Detailed Masterplan \(Sheets 1 - 9\)](#) - January 2025
- [Access Proposals](#) - January 2025
- [Community webinar slides](#) - February 2025

### Preliminary Environmental Information Report (PEIR)

- [Volume 1 - PEIR Non-Technical Summary](#) - January 2025
- [Volume 2 - PEIR Main Text](#) - January 2025
- [Volume 3 - Figures](#) - January 2025
- [Volume 4 - Technical Appendices](#) - January 2025
- [Design Approach Document](#) - January 2025
- [Draft Development Consent Order](#) - January 2025
- [Commitments Register](#) - January 2025

### Statement of Community Consultation (SoCC)

- [Statement of Community Consultation](#) - December 2024
- [Section 47 Notice](#) - December 2024

### Programme Document

- [Programme Document](#) - December 2024

### Post-Stage One Consultation documents

- [Consultation Summary Report](#) - July 2024
- [Interim Masterplan](#) - July 2024
- [Interim Masterplan Detailed Sheets \(1-5\)](#) - July 2024
- [Interim Masterplan Detailed Sheets \(6-9\)](#) - July 2024
- [Early Visual Amenity Changes](#) - March 2024

### Energy Efficiency Form

- [Energy Efficiency Form](#) - January 2024

### Phase One Consultation documents

- [Masterplan](#) - January 2024
- [Detailed Masterplan \(1-3\)](#) - January 2024
- [Detailed Masterplan \(4-9\)](#) - January 2024
- [Visualisations](#) - January 2024
- [Consultation leaflet](#) - January 2024
- [Feedback form](#) - January 2024
- [Energy Efficiency Form](#) - January 2024
- [Exhibition materials](#) - January 2024
- [Environmental Designations](#) - January 2024
- [Constraints Map](#) - January 2024
- [Postcard](#) - January 2024
- [Poster](#) - January 2024
- [Community webinar slides](#) - January 2024
- [NG+ video](#) - January 2024

### General project information

- [Project location map](#) - October 2023
- [4 section maps](#) - October 2023
- [Frequently Asked Questions](#) - October 2023
- [Environmental Impact Assessment Scoping Report](#) - November 2023

Please contact us at the details provided below should you require any documents in an alternative format.

## Contact us

- ✉ Email: [info@gnrsolarpark.co.uk](mailto:info@gnrsolarpark.co.uk)
- ☎ Call Freephone: [08001754054](tel:08001754054) (open 0900-1700 Monday to Friday)
- ✉ Write to: **FREEPOST GNR SOLAR**
- 📘 Facebook: [Great North Road Solar and Biodiversity Park](#)



## **5 COPIES OF SECTION 47 NOTICES AS PLACED (IN NEWARK ADVERTISER AND NOTTINGHAM POST)**

# Nottingham Post

Thursday, December 19, 2024

£2.15

 InYourArea.co.uk

**10 OFF**  
WHEN YOU  
SPEND £20 ON

**No 7** AT *Boots*

Perfect for gifting!  
PAGE 21

Terms and conditions apply

**FOUR FREE TICKETS**  
TO NEW  
YEAR'S  
DAY AT

**southwell**  
racecourse

**IT'S  
A FIRM  
FAVOURITE**  
PAGE 14

Terms and conditions apply

## City council's £522,000 overspend on energy bills

Nottingham City Council's Loxley House headquarters. One councillor has asked whether it should now be sold

**CALLS TO SELL PARTIALLY-EMPTY  
OFFICES AS 'FLABBERGASTING'  
FIGURES ARE REVEALED: PAGE 4**

## How MasterChef champ Laurence does pub grub

PAGE 9

## Beat the Streets festival: first acts revealed

PAGE 10

JAKE HASELDINE



# Great North Road Solar Park and Biodiversity Park

Notice publicising a Statement of Community Consultation (“SoCC”) in accordance with section 47(6) of the Planning Act 2008.

Notice is hereby given that Elements Green Trent Ltd (Company Number 13665771), whose registered office is 1 Half Moon Street, London, United Kingdom, W1J 7AY (“the Applicant”) has produced a Statement of Community Consultation (“SoCC”) in accordance with Section 47 of the Planning Act 2008.

### The project

1. The Applicant is proposing to make an application under Section 37 of the Planning Act 2008 to the Secretary of State for Energy Security and Net Zero for a Development Consent Order to authorise a new solar photovoltaic (PV) electricity generating station “Great North Road Solar and Biodiversity Park” within the district of Newark and Sherwood and the county of Nottinghamshire. The Development would be located on land to the north-west of Newark-on-Trent, the west of the A1, north of the A617, east of Eakring, and south of Egmanton, occupying two main areas to the north and north-west of Staythorpe.

2. When built, Great North Road Solar and Biodiversity Park would have an anticipated solar electricity generation capacity of approximately 1,120 megawatts (MW) Direct Current (DC) / 800 MW Alternating Current (AC), to be connected into the existing National Grid Staythorpe Substation. In doing so, the scheme has the potential to provide enough clean, affordable energy to meet the power needs of approximately 400,000 homes while avoiding more than 250,000 tonnes of CO<sub>2</sub> emissions every year.

3. The Applicant is committed to working closely with stakeholders and the local community to develop the project by having regard to the feedback received through public consultation.

4. The Applicant is represented by Elements Green, a solar and energy storage developer with a 15-year development track record in the UK, EU and internationally. Elements Green is progressing a development pipeline in excess of 12 GW.

### Statement of Community Consultation (SoCC)

5. The Applicant has a duty to consult the local community under Section 47 of the Planning Act 2008. The Applicant has, therefore, prepared a SoCC that explains how people living in the vicinity of the proposed project boundary will be consulted throughout the pre-application process. Additionally, Great North Road Solar and Biodiversity Park is an Environmental Impact Assessment development as it falls within Schedule 2 of the Infrastructure Planning (Environmental Impact Assessment) Regulations 2017. A Preliminary Environmental Information Report (PEIR) has therefore been produced, alongside other consultation documents. The SoCC sets out how the Applicant intends to consult on the PEIR and other consultation documents.

6. The consultation process is designed to provide information about Great North Road Solar and Biodiversity Park and give the opportunity for local communities and other stakeholders to have their say and help develop the final design for the project.

7. The Applicant has consulted relevant Local Planning Authorities on the contents of the SoCC and duly considered the comments made regarding the proposed approach to consultation.

8. This notice provides formal notification of the publication of the SoCC which can be viewed on the project website ([www.gnrsolarpark.co.uk](http://www.gnrsolarpark.co.uk)) and is also available to view free-of-charge from the Community Access Points (CAPs) listed in this notice from Thursday 19 December 2024. Requests for hard copies of the SoCC can be made using the contact details below.

### The consultation process

9. The Applicant will carry out a statutory phase of community consultation on their proposals between 09 January and 20 February 2025.

10. Consultation will include a series of activities, which will be available and accessible to all interested members of the local community. Consultation materials will be available to access at information events, CAPs (listed on the right), on the project website ([www.gnrsolarpark.co.uk](http://www.gnrsolarpark.co.uk)) and by request (via contact details on the right).

### Community Access Points

Venue	Opening hours
<b>Newark and Sherwood District Council Offices,</b> Castle House, Great North Road, Newark, Nottinghamshire, NG24 1BY	<b>Monday to Friday:</b> 9am - 5pm
<b>Southwell Library,</b> The Bramley Centre, King St, Southwell, NG25 0EH	<b>Monday:</b> 9am - 6pm <b>Tuesday, Wednesday and Friday:</b> 9am - 5pm <b>Thursday:</b> 9am - 1pm <b>Saturday:</b> 9am - 3pm <b>Sunday:</b> 11am - 3pm
<b>Newark Library,</b> Beaumont Gardens, Balderton Gate, Newark, NG24 1UW	<b>Monday, Wednesday:</b> 9am - 6:30pm <b>Tuesday, Thursday, Friday:</b> 9am - 6pm <b>Saturday:</b> 9am - 4pm
<b>Ollerton Library,</b> Forest Rd, New Ollerton, Newark, NG22 9PL	<b>Monday, Friday:</b> 9am - 1pm, 1:30pm - 5:30pm <b>Tuesday:</b> 9am - 1pm <b>Wednesday:</b> 2pm - 5:30pm <b>Saturday:</b> 9am - 12:30pm

*\*Current opening times, subject to change by the venue.*

11. The Applicant will host public information events to provide opportunities to view the relevant documentation and speak with members of the project team. The details of the events are as follows:

Location	Date & Time
<b>Maplebeck Village Hall</b> Main Street, Maplebeck, Newark, NG22 OBS	<b>Thursday 23rd January</b> 2pm – 7:30pm
<b>Sutton on Trent Sports Club</b> Grassthorpe Road, Sutton on Trent, Newark, NG23 6QX	<b>Friday 24th January</b> 2pm – 7:30pm
<b>North Muskham Rural Community Centre</b> North Muskham, Newark, NG23 6HL	<b>Saturday 25th January</b> 11am – 3pm
<b>Laxton Village Hall</b> High Street, Laxton, Newark, NG22 ONX	<b>Wednesday 29th January</b> 2pm – 7:30pm
<b>Kelham House Country Manor</b> Main Street, Newark, NG23 5QP	<b>Thursday 30th January</b> 11am – 3pm
<b>Carlton on Trent Village Hall</b> Main Street, Carlton-on-Trent, Newark, NG23 6NW	<b>Friday 31st January</b> 2pm – 7:30pm
<b>Eakring Cator Hall</b> Kirklington Road, Eakring, Newark, NG22 ODA	<b>Tuesday 4th February</b> 2pm – 6:30pm
<b>Newark Town Hall</b> Newark, Nottinghamshire, NG24 1DU	<b>Wednesday 5th February</b> 11am – 3pm
<b>Online Community Webinar</b> Please contact the Applicant or visit the website for joining instructions.	<b>Monday 10th February</b> 5:30pm – 7pm

12. Consultation materials can also be made available by request in alternative formats, such as large print, translated language, audio or braille, by contacting the Applicant using the details below. Please note that there will be a charge of up to £500 for hard copies of the full PEIR.

13. Feedback can be submitted online via the project website, in writing using the contact details below (via email or freepost) or at an information event. Response deadlines for each phase of consultation will be publicised. The deadline for feedback at this second phase of community consultation is 20 February 2025.

### Get in touch

 **Email:** [info@gnrsolarpark.co.uk](mailto:info@gnrsolarpark.co.uk)

 **Write:** Freepost GNR Solar

 **Call:** Freephone 0808 175 4054

 **Visit:** [www.gnrsolarpark.co.uk](http://www.gnrsolarpark.co.uk)

# Great North Road Solar Park and Biodiversity Park

Notice publicising a Statement of Community Consultation (“SoCC”) in accordance with section 47(6) of the Planning Act 2008.

Notice is hereby given that Elements Green Trent Ltd (Company Number 13665771), whose registered office is 1 Half Moon Street, London, United Kingdom, W1J 7AY (“the Applicant”) has produced a Statement of Community Consultation (“SoCC”) in accordance with Section 47 of the Planning Act 2008.

The project

1. The Applicant is proposing to make an application under Section 37 of the Planning Act 2008 to the Secretary of State for Energy Security and Net Zero for a Development Consent Order to authorise a new solar photovoltaic (PV) electricity generating station “Great North Road Solar and Biodiversity Park” within the district of Newark and Sherwood and the county of Nottinghamshire. The Development would be located on land to the north-west of Newark-on-Trent, the west of the A1, north of the A617, east of Eakring, and south of Egmanton, occupying two main areas to the north and north-west of Staythorpe.

2. When built, Great North Road Solar and Biodiversity Park would have an anticipated solar electricity generation capacity of approximately 1120 megawatts (MW) Direct Current (DC) / 800 MW Alternating Current (AC), to be connected into the existing National Grid Staythorpe Substation. In doing so, the scheme has the potential to provide enough clean, affordable energy to meet the power needs of approximately 400,000 homes while avoiding more than 250,000 tonnes of CO<sub>2</sub> emissions every year.

3. The Applicant is committed to working closely with stakeholders and the local community to develop the project by having regard to the feedback received through public consultation.

4. The Applicant is represented by Elements Green, a solar and energy storage developer with a 15-year development track record in the UK, EU and internationally. Elements Green is progressing a development pipeline in excess of 12 GW.

Statement of Community Consultation (SoCC)

5. The Applicant has a duty to consult the local community under Section 47 of the Planning Act 2008. The Applicant has, therefore, prepared a SoCC that explains how people living in the vicinity of the proposed project boundary will be consulted throughout the pre-application process. Additionally, Great North Road Solar and Biodiversity Park is an Environmental Impact Assessment development as it falls within Schedule 2 of the Infrastructure Planning (Environmental Impact Assessment) Regulations 2017. A Preliminary Environmental Information Report (PEIR) has therefore been produced, alongside other consultation documents. The SoCC sets out how the Applicant intends to consult on the PEIR and other consultation documents.

6. The consultation process is designed to provide information about Great North Road Solar and Biodiversity Park and give the opportunity for local communities and other stakeholders to have their say and help develop the final design for the project.

7. The Applicant has consulted relevant Local Planning Authorities on the contents of the SoCC and duly considered the comments made regarding the proposed approach to consultation.

8. This notice provides formal notification of the publication of the SoCC which can be viewed on the project website ([www.gnrsolarpark.co.uk](http://www.gnrsolarpark.co.uk)) and is also available to view free-of-charge from the Community Access Points (CAPs) listed in this notice from Thursday 19 December 2024. Requests for hard copies of the SoCC can be made using the contact details below.

The consultation process

9. The Applicant will carry out a statutory phase of community consultation on their proposals between 09 January and 20 February 2025.

10. Consultation will include a series of activities, which will be available and accessible to all interested members of the local community. Consultation materials will be available to access at information events, CAPs (listed on the right), on the project website ([www.gnrsolarpark.co.uk](http://www.gnrsolarpark.co.uk)) and by request (via contact details on the right).

Community Access Points

Venue	Opening hours
Newark and Sherwood District Council Offices, Castle House, Great North Road, Newark, Nottinghamshire, NG24 1BY	Monday to Friday: 9am - 5pm
Southwell Library, The Bramley Centre, King St, Southwell, NG25 0EH	Monday: 9am - 6pm Tuesday, Wednesday and Friday: 9am - 5pm Thursday: 9am - 1pm Saturday: 9am - 3pm Sunday: 11am - 3pm
Newark Library, Beaumont Gardens, Balderton Gate, Newark, NG24 1UW	Monday, Wednesday: 9am - 6:30pm Tuesday, Thursday, Friday: 9am - 6pm Saturday: 9am - 4pm
Ollerton Library, Forest Rd, New Ollerton, Newark, NG22 9PL	Monday, Friday: 9am - 1pm, 1:30pm - 5:30pm Tuesday: 9am - 1pm Wednesday: 2pm - 5:30pm Saturday: 9am - 12:30pm

\*Current opening times, subject to change by the venue.

11. The Applicant will host public information events to provide opportunities to view the relevant documentation and speak with members of the project team. The details of the events are as follows:

Location	Date & Time
Maplebeck Village Hall Main Street, Maplebeck, Newark, NG22 0BS	Thursday 23rd January 2pm - 7:30pm
Sutton on Trent Sports Club Grassthorne Road, Sutton on Trent, Newark, NG23 6QX	Friday 24th January 2pm - 7:30pm
North Muskham Rural Community Centre North Muskham, Newark, NG23 6HL	Saturday 25th January 11am - 3pm
Laxton Village Hall High Street, Laxton, Newark, NG22 0NX	Wednesday 29th January 2pm - 7:30pm
Kelham House Country Manor Main Street, Newark, NG23 5QP	Thursday 30th January 11am - 3pm
Carlton on Trent Village Hall Main Street, Carlton-on-Trent, Newark, NG23 6NW	Friday 31st January 2pm - 7:30pm
Eakring Cator Hall Kirklington Road, Eakring, Newark, NG22 0DA	Tuesday 4th February 2pm - 6:30pm
Newark Town Hall Newark, Nottinghamshire, NG24 1DU	Wednesday 5th February 11am - 3pm
Online Community Webinar Please contact the Applicant or visit the website for joining instructions.	Monday 10th February 5:30pm - 7pm

12. Consultation materials can also be made available by request in alternative formats, such as large print, translated language, audio or braille, by contacting the Applicant using the details below. Please note that there will be a charge of up to £500 for hard copies of the full PEIR.

13. Feedback can be submitted online via the project website, in writing using the contact details below (via email or freepost) or at an information event. Response deadlines for each phase of consultation will be publicised. The deadline for feedback at this second phase of community consultation is 20 February 2025.

Get in touch

 Email: [info@gnrsolarpark.co.uk](mailto:info@gnrsolarpark.co.uk)

 Write: Freepost GNR Solar

 Call: Freephone 0808 175 4054

 Visit: [www.gnrsolarpark.co.uk](http://www.gnrsolarpark.co.uk)



PUBLIC NOTICES

Newark & Sherwood District Council  
Town & Country Planning (Development Management Procedure)  
(England) Order 2015 Notice Under Article 15  
Planning (Listed Buildings & Conservation Areas) Act 1990  
The Town and Country Planning (Environmental Impact Assessment)  
Regulations 2017  
We are considering applications for the following:  
**Hooveringham**  
24/02114/HOUSE – Proposed single storey rear extension. –  
The Dower House Gonalston Lane  
**Newark**  
24/01929/S73M – Application for variation of condition 09 pursuant  
to application reference 02/02798/FULM (Proposed Class A1 retail  
store with associated car parking, landscaping and highway works) to  
allow use of the premises as supermarket having a maximum net sales  
area of 1,677sq m, including an area of up to 355sqm for the sale of  
comparison goods floorspace and an area of up to 185sqm for the  
sale and display of any comparison goods by a catalogue showroom  
retailer. – Homebase Northgate Retail Park Trent Lane  
24/01844/FUL – Proposed replacement rear windows – Mill Gate  
Community Centre Pelham Street  
**South Searle**  
24/02116/S73 – S73 application for variation of Condition 2  
(Approved Plans) of Planning Permission 24/00339/FUL Replacement  
dwelling. – Church View Farm Swinderby Road  
**Thurgarton**  
24/02119/HOUSE – Proposed single-storey side extension to dwelling,  
new garage building and green house including new gates, fencing and  
associated works. – Hill Farm House Priory Road  
Details are on our website [www.newark-sherwooddc.gov.uk](http://www.newark-sherwooddc.gov.uk). You can  
submit comments on our website or by letter to Planning Development,  
Castle House, Great North Road, Newark NG24 1BY (inc application  
ref) by 12/01/2025. The personal information you provide will be used  
by the Council, the Data Controller, in accordance with UK Data Privacy  
laws. We publish comments on our website and will only remove the  
authors tel numbers, email address and signature. See our website for  
further information and our planning privacy notice.

What makes  
you unique?

INFORMATIVE • TRUSTED • EFFECTIVE

**NEWARK**  
**Advertiser**  
Since 1854  
ILIFFE MEDIA

MOTORS

# CARS WANTED CASH TODAY

Cars/Vans/Motorhomes and Classic cars

for cash. Top prices paid

**£800 - £25,000**

We come to you  
**ANYTHING CONSIDERED!**  
**CASH TODAY**

Open 7 days a week 24/7

Well established family business  
that wont be beaten on price

We can be with you within  
30 minutes - anywhere



**07415 119394**

# CARS WANTED CASH TODAY

Open All 1/2 Hour Anywhere  
Xmas & Hols + Vans

(MOTORHOMES & CLASSIC CARS)

**£750 - £20,000 MAX**

High or Low Mileage

£750  
min

**MOT OR NOT**



(ALL CARS)

**GOOD CLEAN**

£20,000  
max

**OR DAMAGED**

Family-Run Business, Well Est.

7am to 9pm, 7 days a week.



**07966 971208**

LOCAL DEALER • HONEST AND REPUTABLE  
ADVERTISING WEEKLY FOR OVER 30 YEARS  
FAMILY RUN BUSINESS

# WANTED

ALL CARS, VANS, TRUCKS  
AND 4X4'S NEW & OLD  
FROM £100-£10,000 PAID!

INCL SCRAP VEHICLES  
AND NON RUNNERS  
WE COME TO YOU



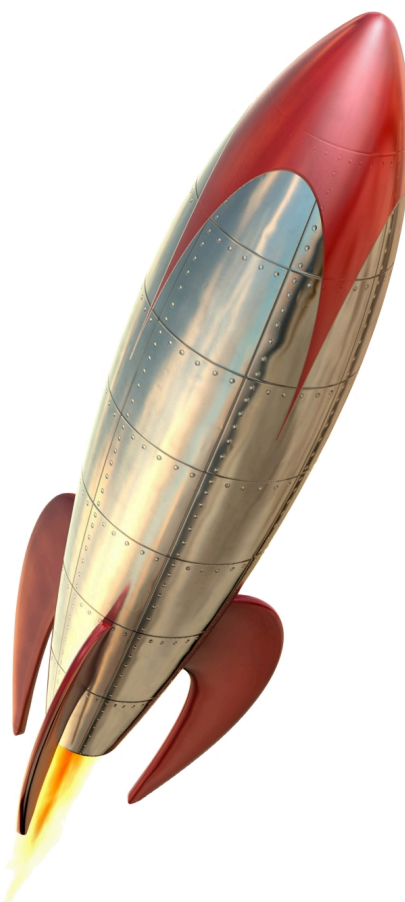
TOP  
PRICES  
PAID

CALL WAYNE ON 07778 057991 WWW.WP-CARS.CO.UK

# Boost

# your

# business



INFORMATIVE • TRUSTED • EFFECTIVE

**NEWARK**  
**Advertiser**  
Since 1854

ILIFFE MEDIA

Please recycle  
this newspaper

The recycled paper content of UK newspapers in 2021 was 65.7%

ILIFFE MEDIA